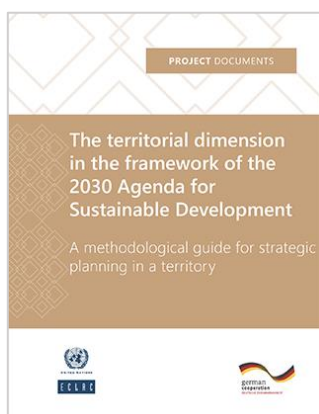




Selected titles on Integrated Approaches to Resilience Building



[The territorial dimension in the framework of the 2030 Agenda for Sustainable Development: A methodological guide for strategic planning in a territory](#)

Corporate Author(s): [NU. CEPAL](#)

Series: [Documentos de Proyectos](#)

Date Issued: 2021-05-13

31 p.

[LC/TS.2019/58](#)

Link: <http://repositorio.cepal.org/handle/11362/46874>

The purpose of this document is to make available a methodological guide to the territory's actors in order to promote reflection on development practices in the field, taking the subnational level as the unit of analysis. That could be a municipality, an intermunicipal area, or a cross-border area...



[Report of the Fourth Meeting of the Presiding Officers of the Regional Conference on Social Development in Latin America and the Caribbean](#)

Corporate Author(s): [NU. CEPAL](#)

Date Issued: 2021-05-05

23 p.

[LC/MDS.4/4](#)

Link: <http://repositorio.cepal.org/handle/11362/46866>

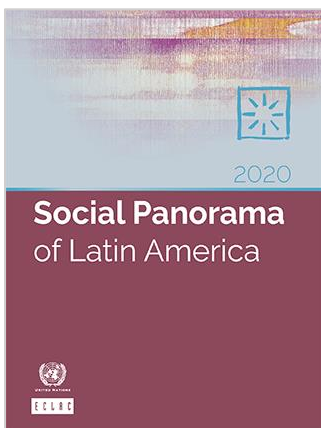


[The coronavirus disease \(COVID-19\) pandemic: an opportunity for a systemic approach to disaster risk for the Caribbean](#)

Date Issued: 2021-03-19
34 p.

Link: <http://repositorio.cepal.org/handle/11362/46732>

The COVID-19 pandemic is a disaster that combines a biological threat with various vulnerabilities, such as the organizational and response capacity of health systems, overcrowding, informality, social work practices, and public transport. The human and economic impacts of the COVID-19 pandemic ar...



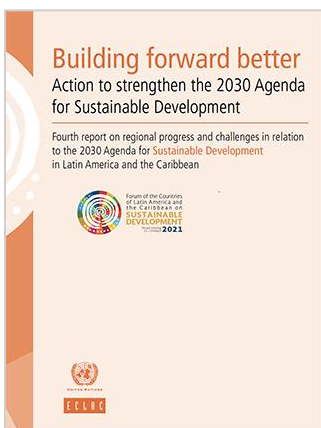
[Social Panorama of Latin America 2020](#)

Corporate Author(s): [NU. CEPAL](#)
Series: [Social Panorama of Latin America](#)
Date Issued: 2021-03-16

258 p.
[LC/PUB.2021/2-P/Rev.1](#) | [LC/PUB.2021/2-P](#)

Link: <http://repositorio.cepal.org/handle/11362/46688>

This edition of the Social Panorama of Latin America examines the social impact of an unprecedented crisis. The effects of the coronavirus disease (COVID-19) pandemic have spread to all areas of human life, altering the way we interact, crippling economies and bringing about profound changes in soc...



[Building forward better: Action to strengthen the 2030 Agenda for Sustainable Development. Fourth report on regional progress and challenges in relation to the 2030 Agenda for Sustainable Development in Latin America and the Caribbean](#)

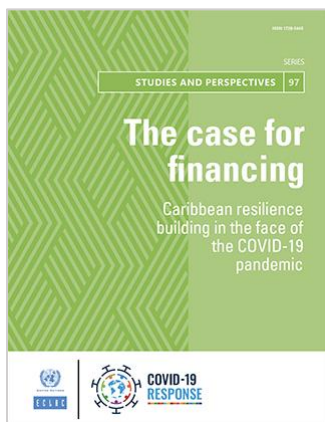
Corporate Author(s): [NU. CEPAL](#)

Date Issued: 2021-03-16

188 p.
[LC/FDS.4/3/Rev.1](#)

Link: <http://repositorio.cepal.org/handle/11362/46696>

In an increasingly uncertain world, the decade of action for the implementation of the 2030 Agenda for Sustainable Development and its 17 Sustainable Development Goals (SDGs) is a reference point and a road map. In the face of growing tensions at both the domestic and international levels, the SDGs...



[The case for financing: Caribbean resilience building in the face of the COVID-19 pandemic](#)

[Alleyne, Dillon](#) | [McLean, Sheldon](#) | [Abdulkadri, Abdullahi](#) | [Camarinhas, Catarina](#) | [Hendrickson, Michael](#) | [Jones, Francis](#) | [Phillips, Willard](#) | [Tokuda, Hidenobu](#) | [Pantin, Machel](#) | [Skerrette, Nyasha](#)

Series: [Studies and Perspectives Series – The Caribbean](#) No. 97

Date Issued: 2021-02-02

87 p.

[LC/TS.2020/161](#) | [LC/CAR/TS.2020/7](#)

Link: <http://repositorio.cepal.org/handle/11362/46629>

The emergence of the COVID-19 pandemic has not only been sudden but has required significant re-adjustment on the part of world economies with far-reaching effects anticipated in the short to medium term. For vulnerable Caribbean economies already challenged by high debt service payments, external ...



[Evaluation report of the workshop on Leaving No One Behind in the Caribbean: building resilience through universal social protection](#)

Corporate Author(s): [NU. CEPAL. Sede Subregional para el Caribe](#)

Date Issued: 2020-12-07

52 p.

[LC/CAR/2020/8](#)

Link: <http://repositorio.cepal.org/handle/11362/46496>



[The Caribbean Outlook: Forging a people-centred approach to sustainable development post-COVID-19](#)

Corporate Author(s): [NU. CEPAL](#)

Date Issued: 2020-10-23

70 p.

[LC/SES.38/12](#)

Link: <http://repositorio.cepal.org/handle/11362/46192>

The COVID-19 pandemic has exacerbated existing vulnerabilities and inequalities in Caribbean society, including with regard to access to information and communication technologies (ICTs) and education services, food insecurity, and the situation of women and girls given the significant increase in ...



Reconstruction and transformation with equality and sustainability in Latin America and the Caribbean

Corporate Author(s): [NU. CEPAL](#)

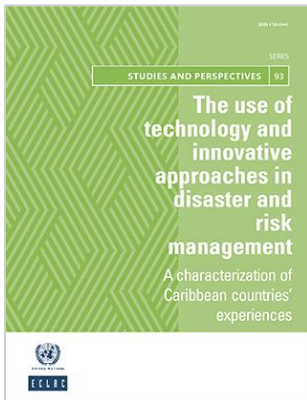
Date Issued: 2020-10-19

32 p.

[LC/SES.38/11](#)

Link: <http://repositorio.cepal.org/handle/11362/46130>

The coronavirus disease (COVID-19) pandemic has had an unprecedented impact in Latin America and the Caribbean. It has become the worst economic and social crisis in a century and has exposed significant structural gaps in the region's development model. A profound transformation is necessary...



The use of technology and innovative approaches in disaster and risk management: a characterization of Caribbean countries' experiences

Fontes de Meira, Luciana | Bello, Omar

Series: [Studies and Perspectives Series – The Caribbean](#) **No. 93**

Date Issued: 2020-09-08

57 p.

[LC/CAR/TS.2020/3](#) | [LC/TS.2020/106](#)

Link: <http://repositorio.cepal.org/handle/11362/45990>

The application of technologies, research, development, promotion of innovative approaches and local knowledge to confront complex issues posed by hazards are important components of managing disaster risks and guiding informed decision-making. Hence commitments to support and enhance access to tec...



Policy Brief: Planning for resilience: an integrated approach to tackle climate change in the Caribbean

Corporate Author(s): [NU. CEPAL. Sede Subregional para el Caribe](#)

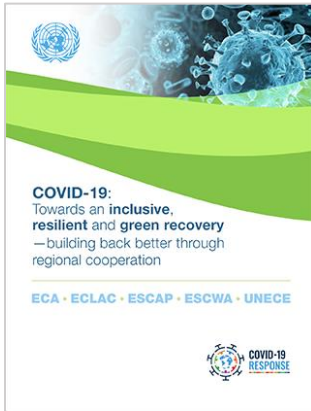
Date Issued: 2020-07-02

9 p.

[LC/CAR/2020/1](#)

Link: <http://repositorio.cepal.org/handle/11362/45737>

The Caribbean subregion is exceptionally vulnerable to the impacts of climate change and extreme weather events. Vulnerability is a key multidimensional concept at the heart of resilience building, relating to each country's multiple spatial and socioeconomic risks and conditions...



[COVID-19: Towards an inclusive, resilient and green recovery —building back better through regional cooperation](#)

Corporate Author(s): [NU. ECA](#) | [NU. CEPAL](#) | [NU. ESCAP](#) | [NU. ESCWA](#) | [NU. UNECE](#)

Date Issued: 2020-05-18

14 p.

Link: <http://repositorio.cepal.org/handle/11362/45551>

This document provides key policy messages from the UN regional commissions and highlights the vital role of regional cooperation in an effective recovery from the COVID-19 pandemic. The COVID-19 crisis has caused untold disruption to lives and economies.



[The resilience of infrastructure services in Latin America and the Caribbean: a first approach](#)

Author(s): [Weikert Bicalho, Fabio](#)

Series: [FAL Bulletin](#) No. 374

Date Issued: 2020-04-20

16 p.

Link: <http://repositorio.cepal.org/handle/11362/45450>

This FAL Bulletin discusses the concepts that are considered central to infrastructure resilience, and identifies the main challenges in making infrastructure more resilient and thus advance development in the countries of Latin America and the Caribbean.



[Regional Agenda for Inclusive Social Development](#)

Corporate Author(s): [NU. CEPAL](#)

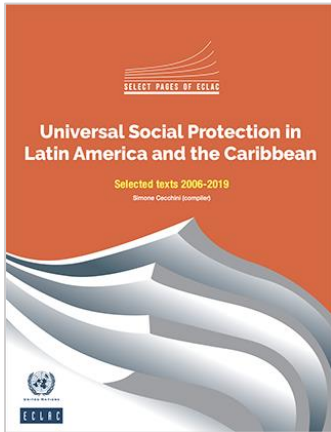
Date Issued: 2020-04-01

44 p.

[LC/CDS.3/5](#)

Link: <http://repositorio.cepal.org/handle/11362/45330>

The Regional Agenda for Inclusive Social Development was adopted by the member States of the Economic Commission for Latin America and the Caribbean (ECLAC) at the third session of the Regional Conference on Social Development in Latin America and the Caribbean, held in Mexico City from 1 to 3 Octo...



[Universal Social Protection in Latin America and the Caribbean. Selected texts 2006-2019](#)

[Cecchini, Simone](#)

Series: [Select pages of ECLAC](#) No. 8

Date Issued: 2020-01-23

280 p.

[LC/M.2019/5](#)

Link: <http://repositorio.cepal.org/handle/11362/45093>

Social protection is the first axis of the Regional Agenda for Inclusive Social Development, which was recently adopted at the third session of the Regional Conference on Social Development in Latin America and the Caribbean, held in Mexico City in October 2019.



[Planning for sustainable territorial development in Latin America and the Caribbean](#)

Corporate Author(s): [NU. CEPAL. ILPES](#)

Date Issued: 2019-08-23

207 p.

[LC/CRP.17/3](#)

Link: <http://repositorio.cepal.org/handle/11362/44732>

Territory is understood as a human community with a sense of belonging, future and ownership of a physical, natural or artificial space. It is a social construct nourished by culture, politics, technology and infrastructure, which serves to address the challenges of development, sustainability and ...



[Methodological guide on planning for the implementation of the 2030 Agenda in Latin America and the Caribbean](#)

Corporate Author(s): [NU. CEPAL](#)

Series: [Documentos de Proyectos](#)

Date Issued: 2018-10-30

58 p.

[LC/TS.2018/63](#)

Link: <http://repositorio.cepal.org/handle/11362/44193>

Three years into the implementation of the 2030 Agenda, Latin America and the Caribbean face great challenges. More than half of the countries in the region have national coordination mechanisms for the implementation and follow-up of this Agenda.