

# Caribbean Urban Forum

Sustainable urbanization:  
bridging the digital divide, from knowledge to action





UN-HABITAT REPORT

# Cities and Pandemics: Towards a more just, green and healthy future

## LAUNCH



Tuesday  
30 March 2021



2:30 - 5 pm  
East African Time  
(11:30 - 2 pm GMT)

### Panel I.



2:30 - 4 pm

Reactions to the Cities and Pandemics Report. Impacts of and learnings from responses to COVID-19 in cities one year on with the pandemic

### Panel II.



4 - 5 pm

'New normal' for future cities and communities. Informed by the pandemic, how to move towards a 'new social contract' that fosters rights-based, well-planned, inclusive, climate resilient cities



[Register to participate](#)



[Watch the launch](#)

[unhabitat-info@un.org](mailto:unhabitat-info@un.org)  
[www.unhabitat.org](http://www.unhabitat.org)



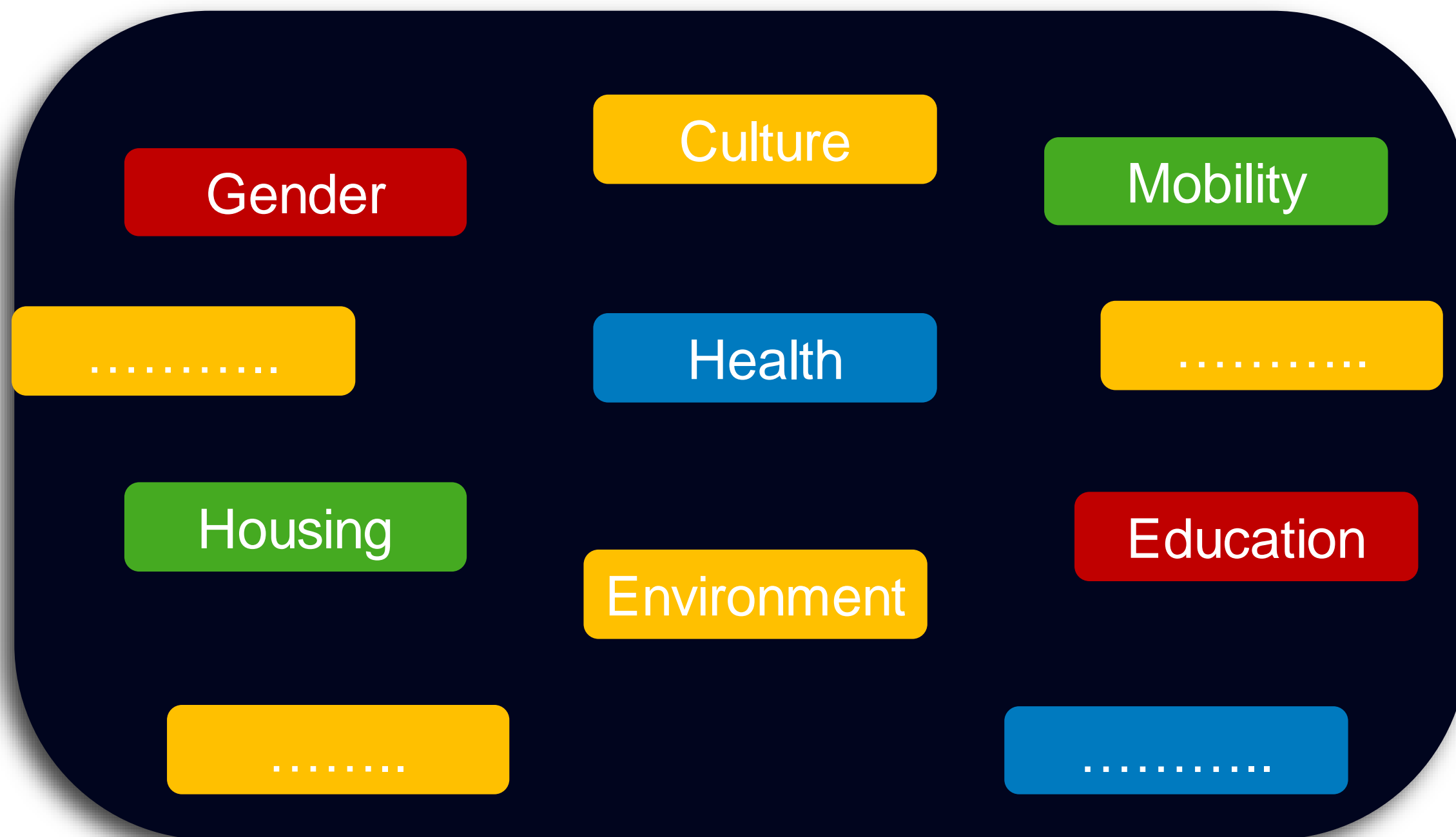
<b>1</b> FIN DE LA POBREZA	<b>2</b> HAMBRE CERO	<b>3</b> SALUD Y BIENESTAR	<b>4</b> EDUCACIÓN DE CALIDAD	<b>5</b> IGUALDAD DE GÉNERO	<b>6</b> AGUA LIMPIA Y SANEAMIENTO
<b>7</b> ENERGÍA ASEQUIBLE Y NO CONTAMINANTE	<b>8</b> TRABAJO DECENTE Y CRECIMIENTO ECONÓMICO	<b>9</b> INDUSTRIA, INNOVACIÓN E INFRAESTRUCTURA	<b>10</b> REDUCCIÓN DE LAS DESIGUALDADES	<b>11</b> CIUDADES Y COMUNIDADES SOSTENIBLES	<b>12</b> PRODUCCIÓN Y CONSUMO RESPONSABLES
<b>13</b> ACCIÓN POR EL CLIMA	<b>14</b> VIDA SUBMARINA	<b>15</b> VIDA DE ECOSISTEMAS TERRESTRES	<b>16</b> PAZ, JUSTICIA E INSTITUCIONES SÓLIDAS	<b>17</b> ALIANZAS PARA LOGRAR LOS OBJETIVOS	<b>OBJETIVOS DE DESARROLLO SOSTENIBLE</b>





# Territorial Approach to Inclusion and Prosperity

## SOCIAL-ECONOMIC-ENVIRONMENTAL Sectorial Policies and Programs








## SPATIAL – TERRITORIAL Urban planning and governance



# Territorial Approach to Inclusion and Prosperity

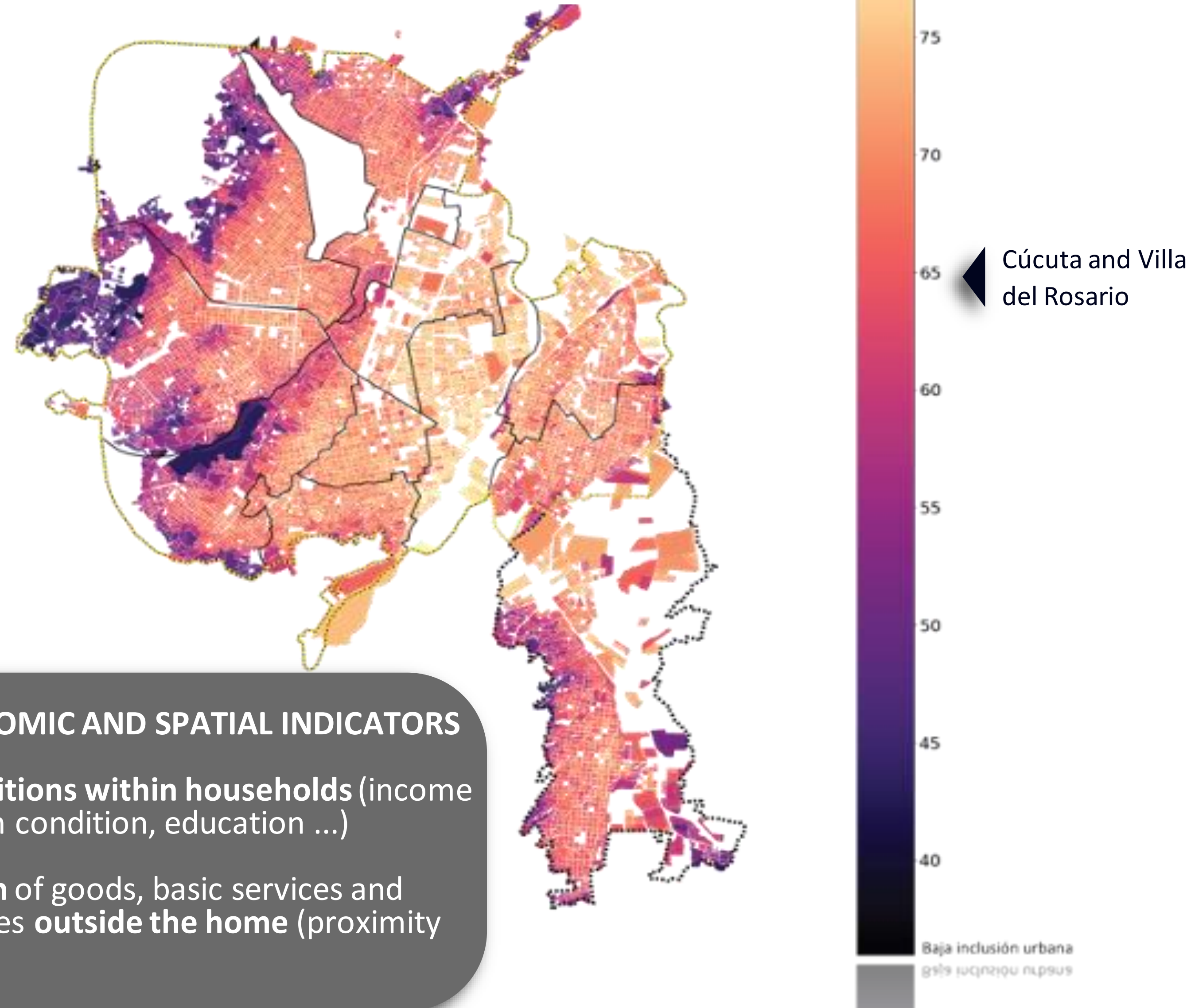
## The Urban Inclusion Marker **new!**

It measures the level of inclusion of a city and its potential contribution to integration and prosperity, in terms of facilitating access to goods, services and opportunities to all citizens, in line with the notion of the **"right to the city"** and the **fundamentals recommended by the NAU of a prosperous and inclusive city**.

-  Affordable quality housing and services
-  Employment and economic opportunities
-  Health and clean environment
-  Education, diversity and culture
-  Public space, safety, vibrant urban environment

- SOCIO-ECONOMIC AND SPATIAL INDICATORS**
- **Living conditions within households** (income level, health condition, education ...)
  - **Distribution of goods, basic services and opportunities outside the home** (proximity factor)

This map identifies areas that concentrate deficits and barriers to spatial and socio-economic inclusion.





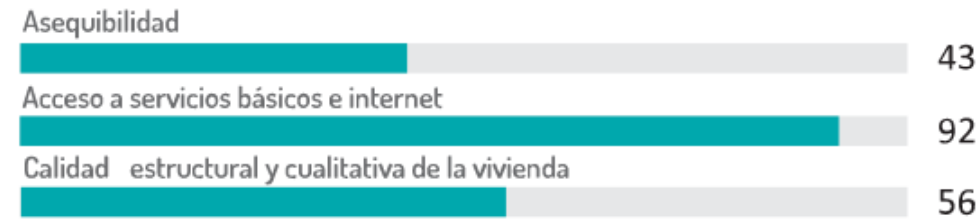
# Territorial Approach to Inclusion and Prosperity

## The Urban Inclusion Marker – Barranquilla



Vivienda asequible, de calidad y con servicios

66/ 100



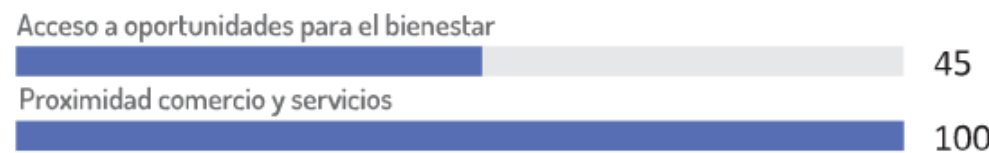
Acceso a educación, cultura y diversidad

69 / 100



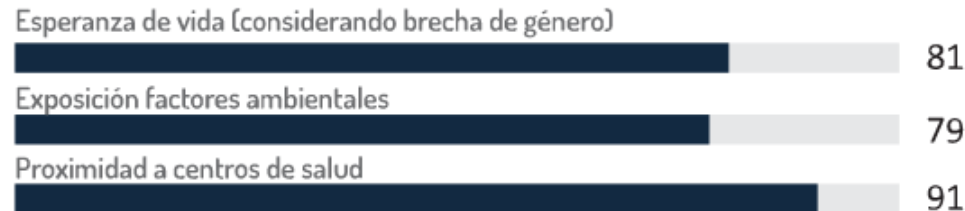
Empleo y oportunidades económicas

70 / 100



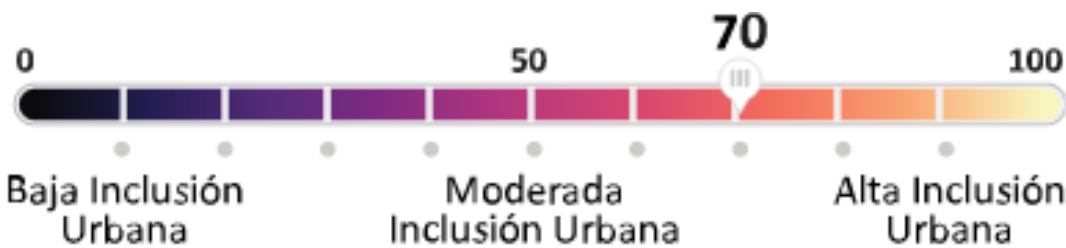
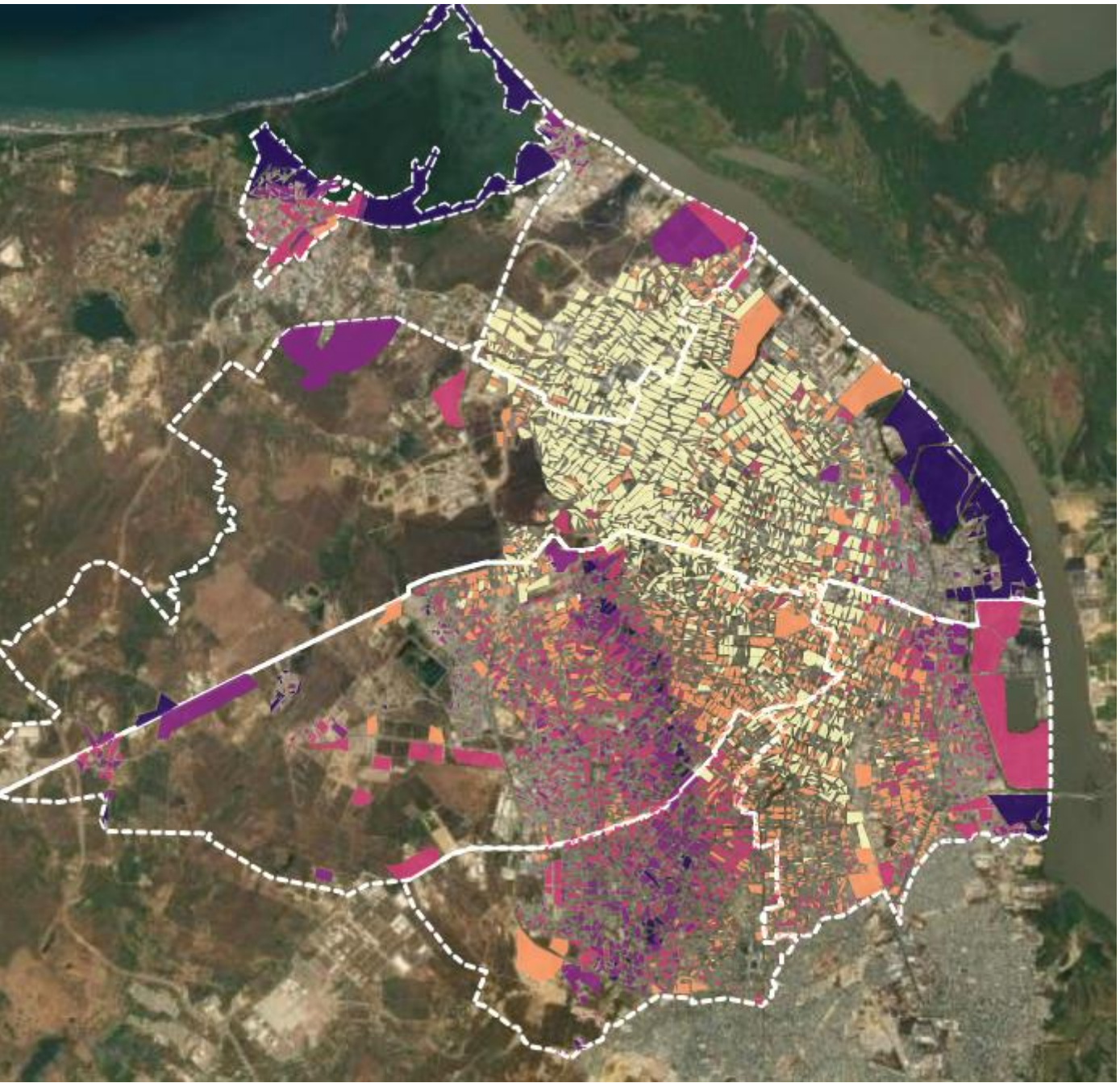
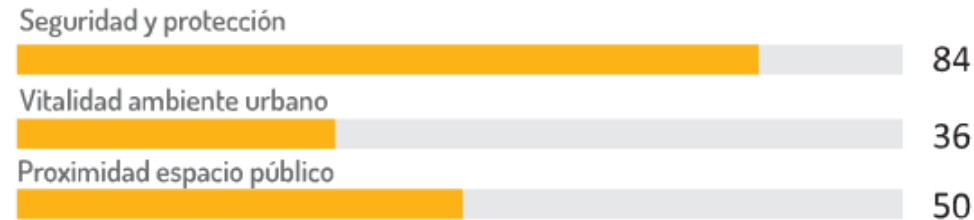
Salud y bienestar

82 / 100



Espacio público, seguridad y recreación

63 / 100



Barranquilla				
Intervalo	Área urbana	N. Personas	% Área	% Personas
100 - 90	0	0	0	0
90 - 80	296429.634	4360	0.29	0.39
80 - 70	28451403.3	587306	28.07	52.69
70 - 60	22098323.9	498645	21.8	44.73
60 - 50	2946982.76	20882	2.91	1.87
50 - 40	2914192.63	3531	2.87	0.32

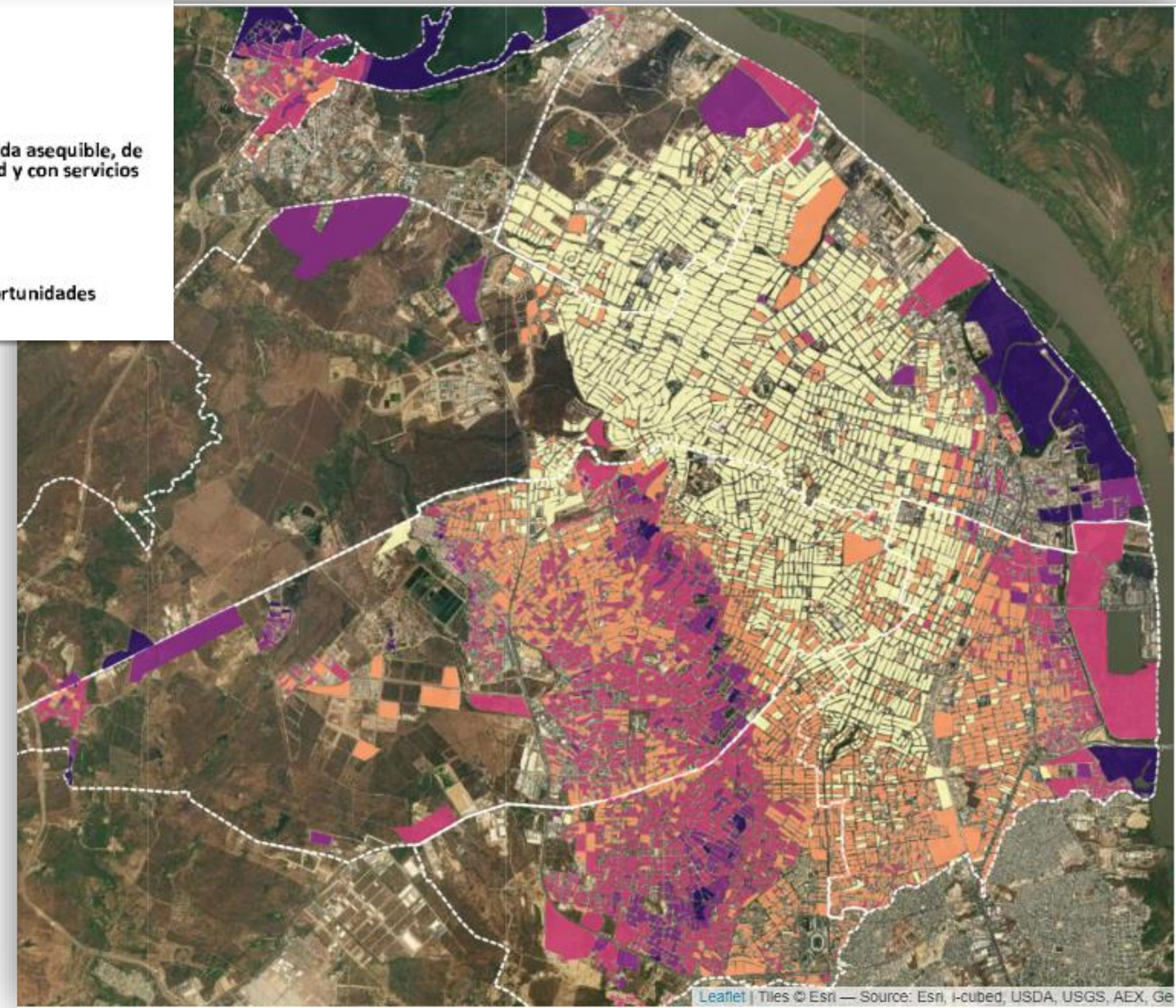
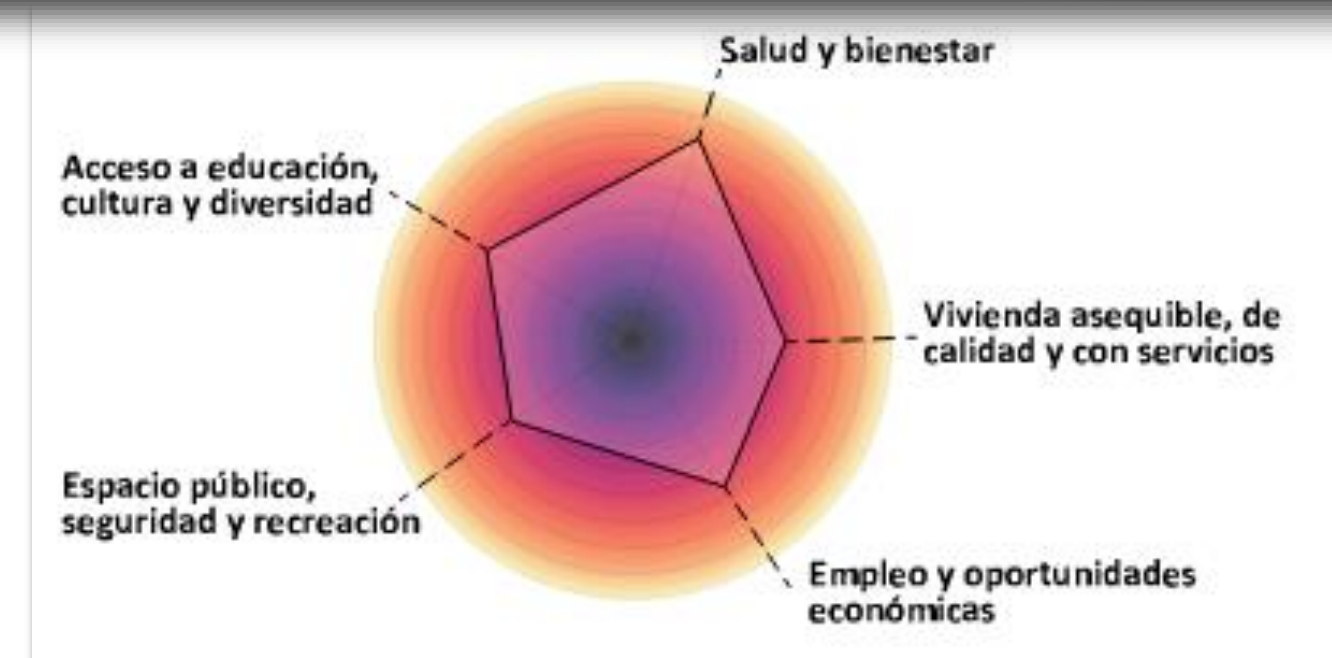
Cúcuta y Villa del Rosario				
Intervalo	Área urbana	N. Personas	% Área	% Personas
100 - 90	0	0	0	0
90 - 80	72550.204	870	0.08	0.13
80 - 70	16664617	212293	17.98	30.61
70 - 60	24283110	394443	26.2	56.87
60 - 50	7975328.9	69980	8.6	10.09
50 - 40	4409589.7	15832	4.76	2.28



# Territorial Approach to Inclusion and Prosperity

## The Urban Inclusion Marker **new!**

- Monitoring tool – through the baseline scoring
- Tool for decisión-making, prioritization of investments and impact measure
- The scoreboard allows for thematic analysis by layers to identify performance levels of specific areas



Adequate Housing



Health and Well-being



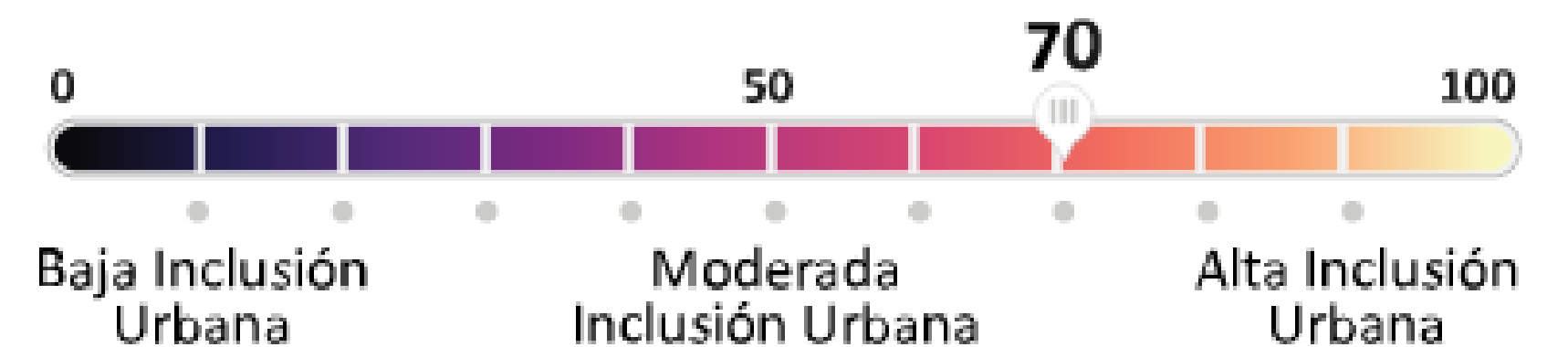
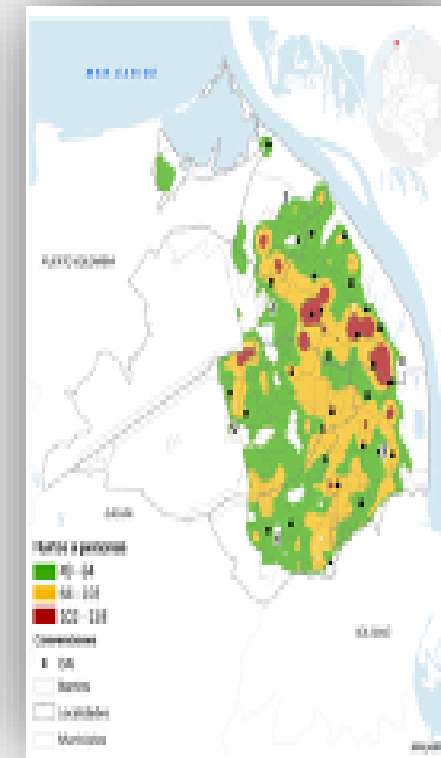
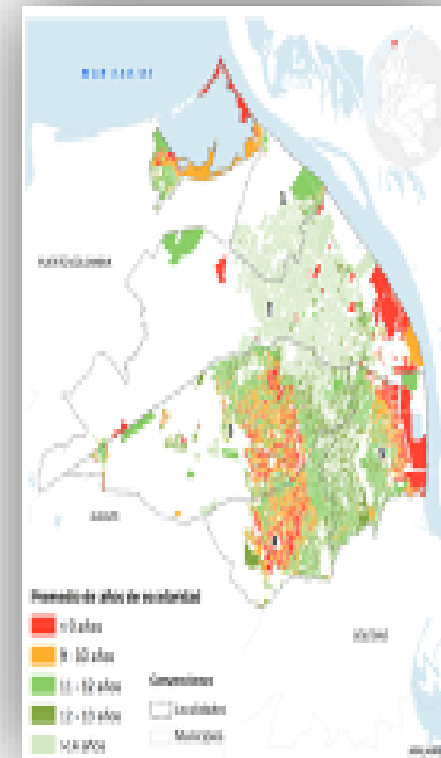
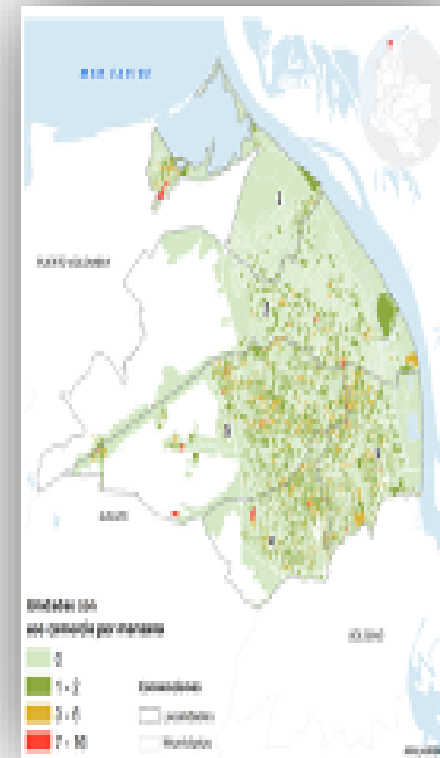
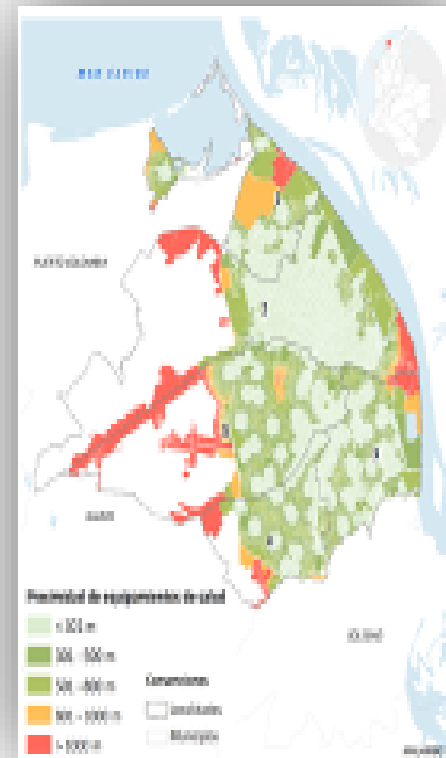
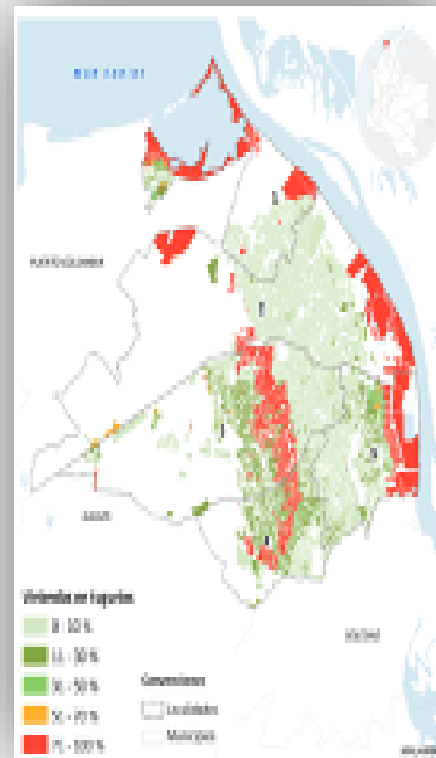
Education and Culture



Public Space, recreation and security



Economic Opportunities





# Territorial Interventions based on evidence and data

## Metropolitan Area – city of Barranquilla

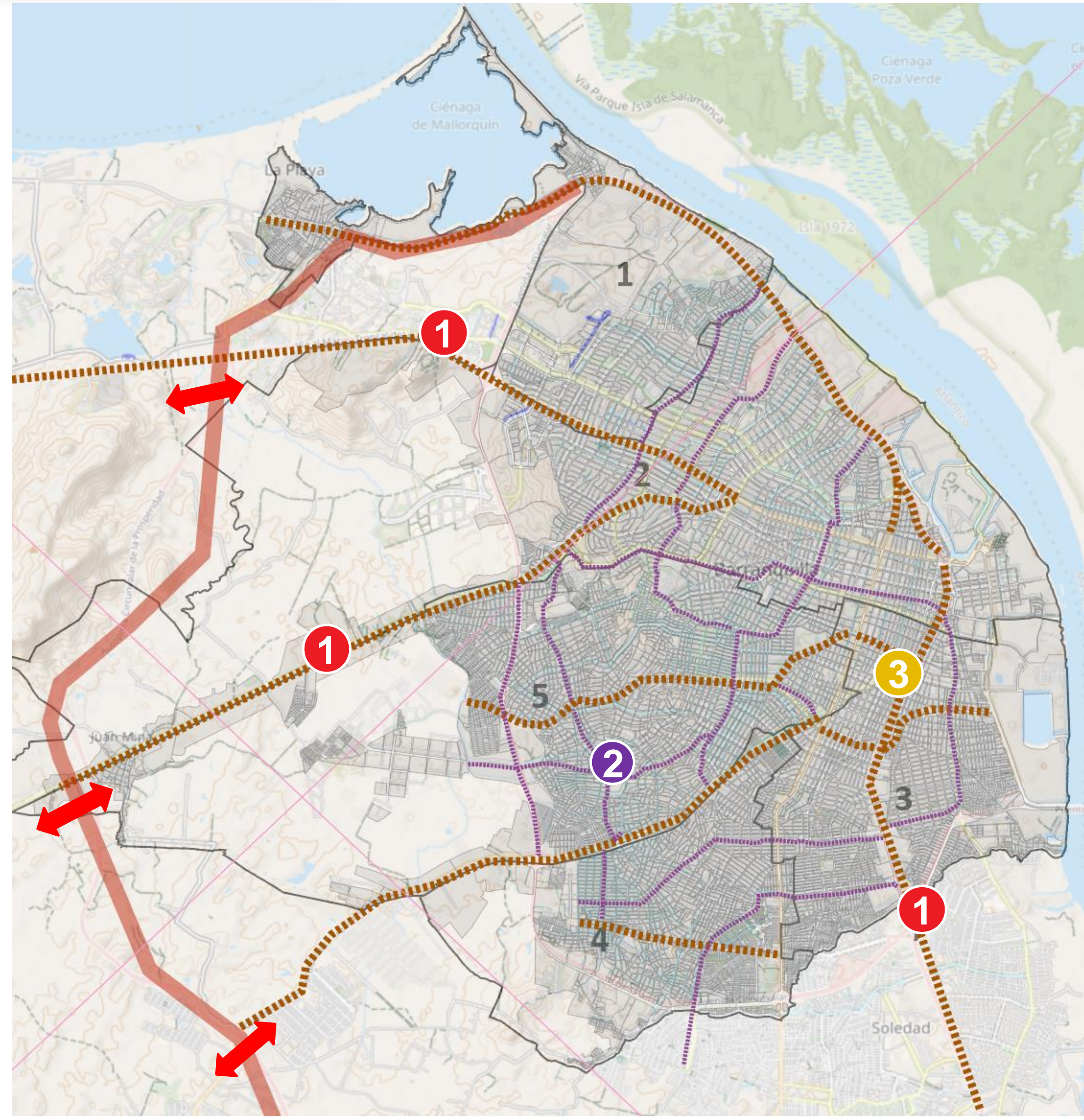


### Planning Instruments

- Formulation of Plan Estratégico Metropolitano de Ordenamiento Territorial
- Strengthening Plan Integral de Desarrollo Metropolitano.
- "Avoid the conurbation of the metropolitan territory by strengthening the peripheral centralities, through transversal integration and the structuring of a transition zone under a scheme of functional and spatial integration of the metropolitan order, ensuring conservation and recovery of strategic ecosystems." (PIDM-DMOT 2013).

### Interventions

- 1 Reconfigure existing road profiles to allow for different types of mobility and to allow for changes of transport systems in an efficient grid.
- 2 Sustainable urban mobility: to enhance the facilitating element of active urban mobility (pedestrian and bicycle) and as spaces that complements the city's green infrastructure.
- 3 Define structuring axes of alternative mobility to facilitate access to urban centrality and opportunities.







# Territorial Interventions based on evidence and data

## Metropolitan Area – city of Barranquilla



Adequate Housing



Health and Well-being



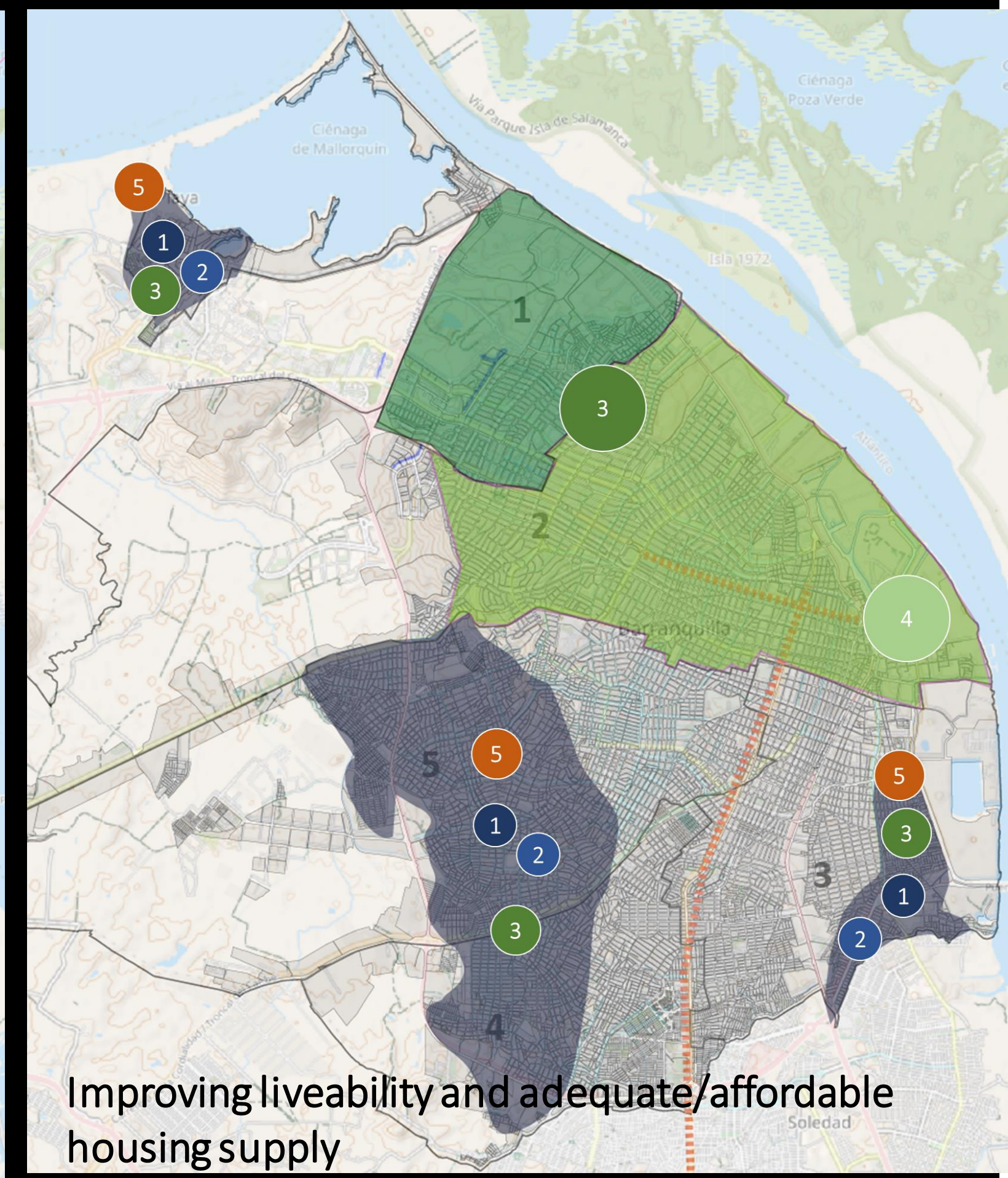
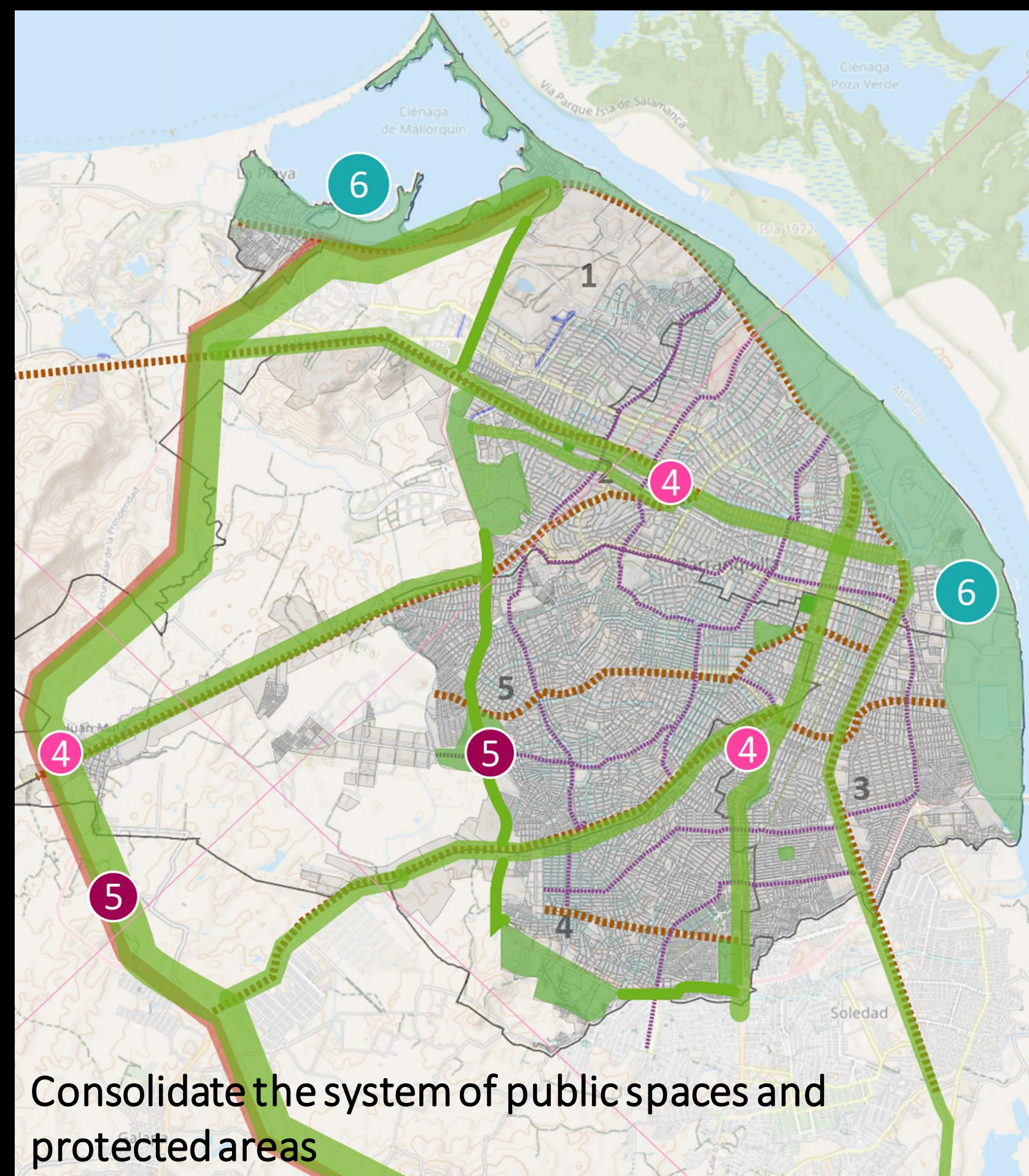
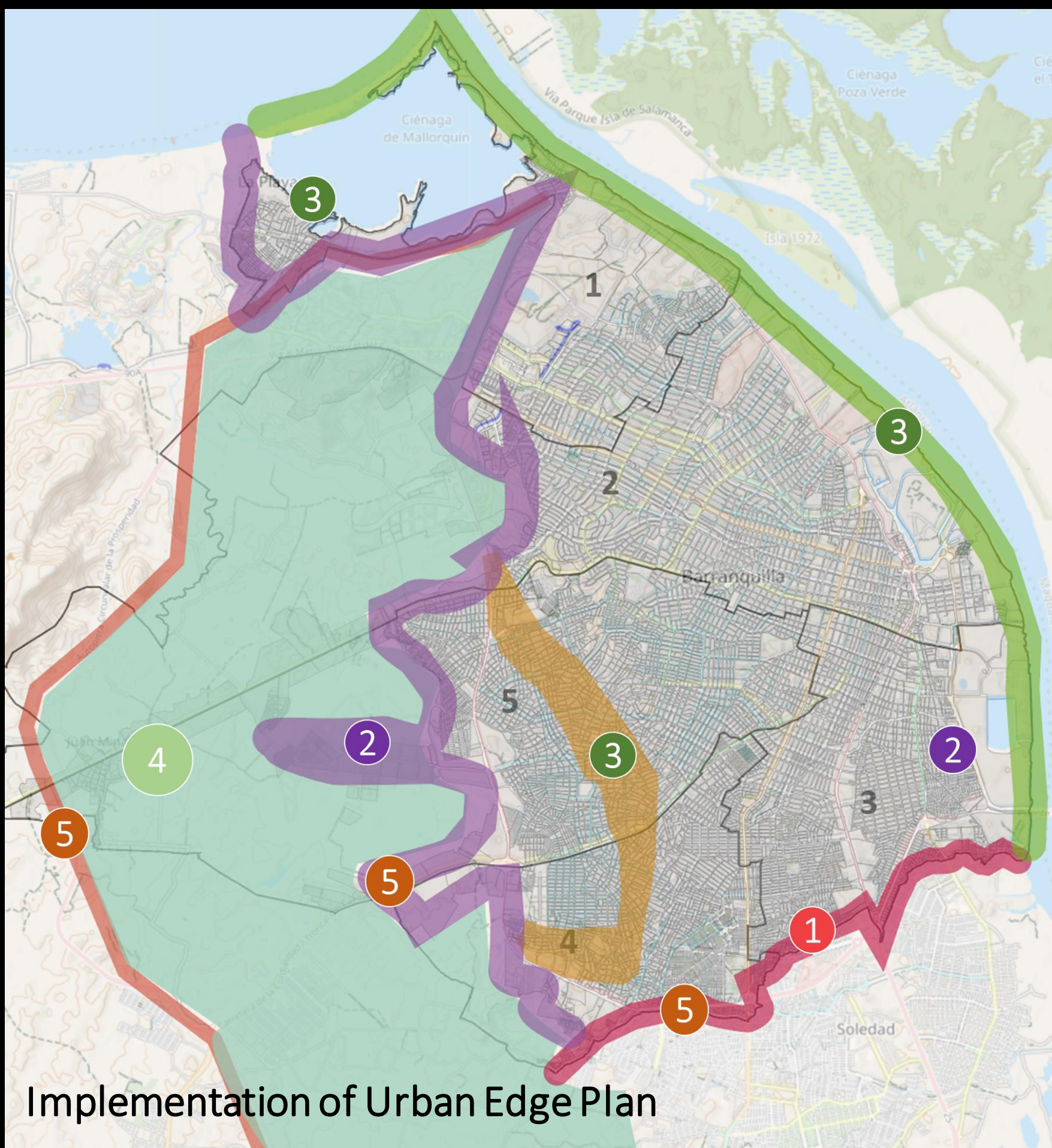
Education and Culture



Public Space, recreation  
and security



Economic Opportunities





# Territorial Interventions based on evidence and data

## Metropolitan Area – city of Barranquilla



Adequate Housing



Health and Well-being



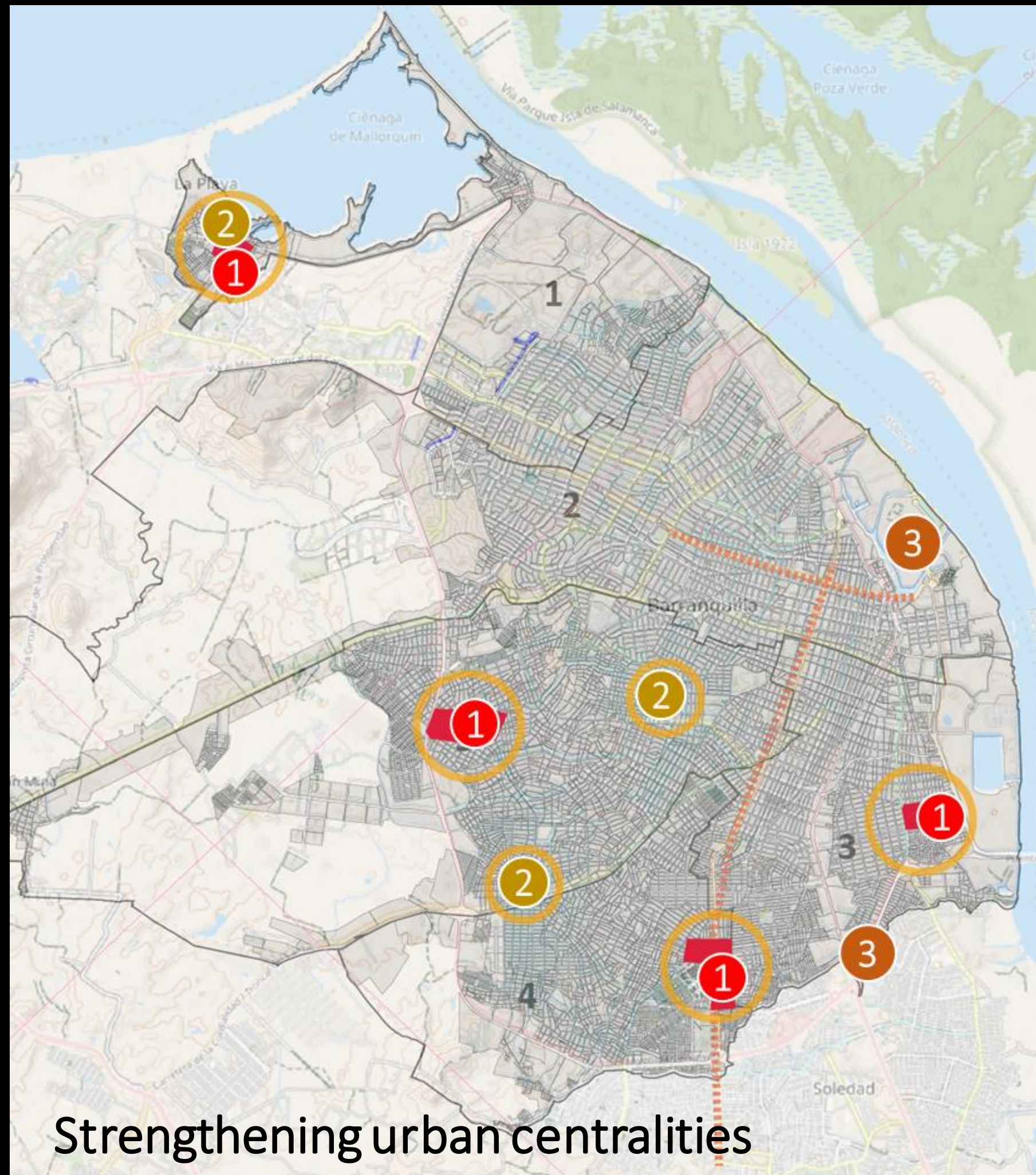
Education and Culture



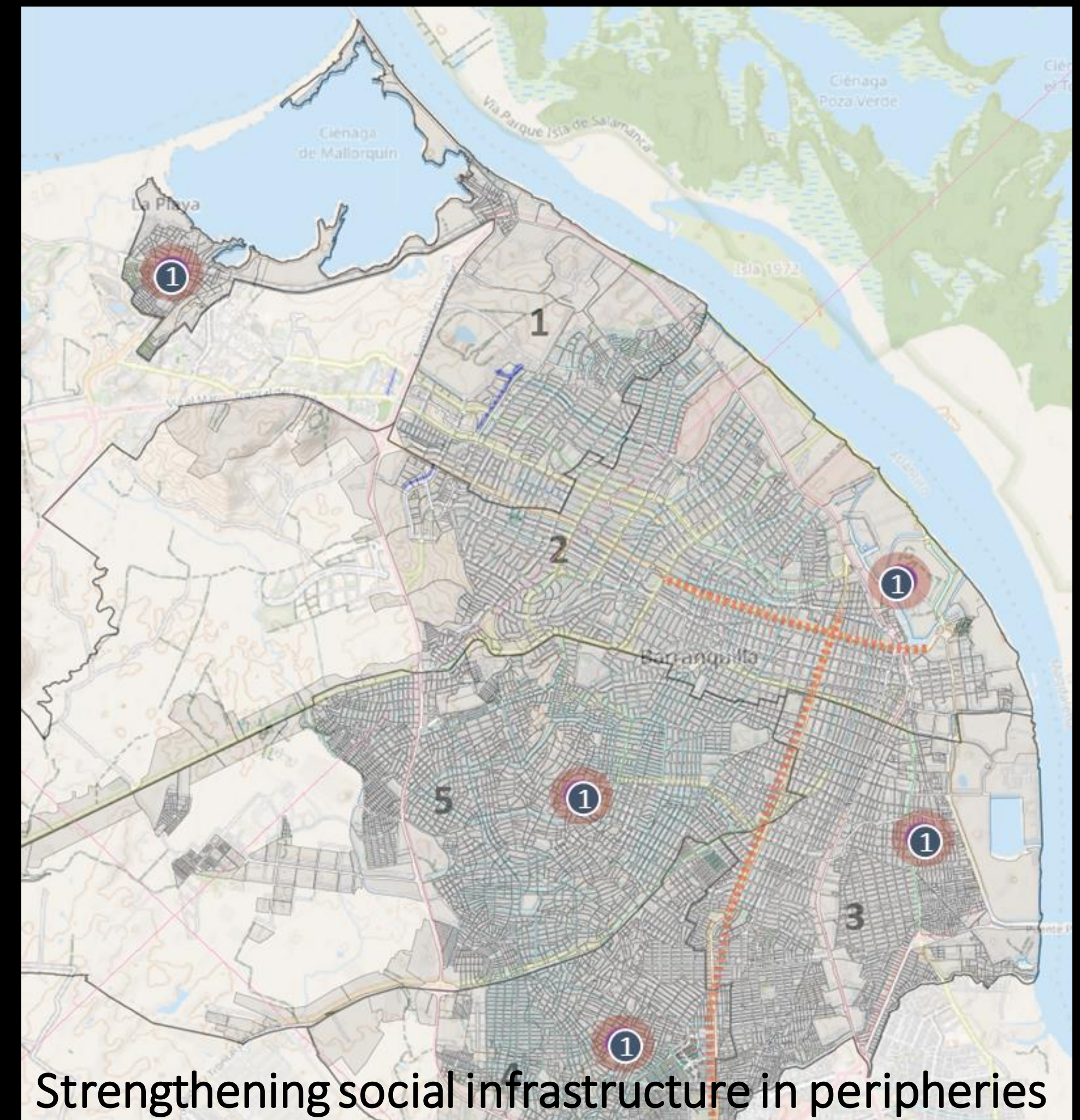
Public Space, recreation  
and security



Economic Opportunities



Strengthening urban centralities



Strengthening social infrastructure in peripheries



# Territorial Interventions based on evidence and data

## Neighborhood level – city of Barranquilla



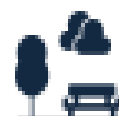
Adequate Housing



Health and Well-being



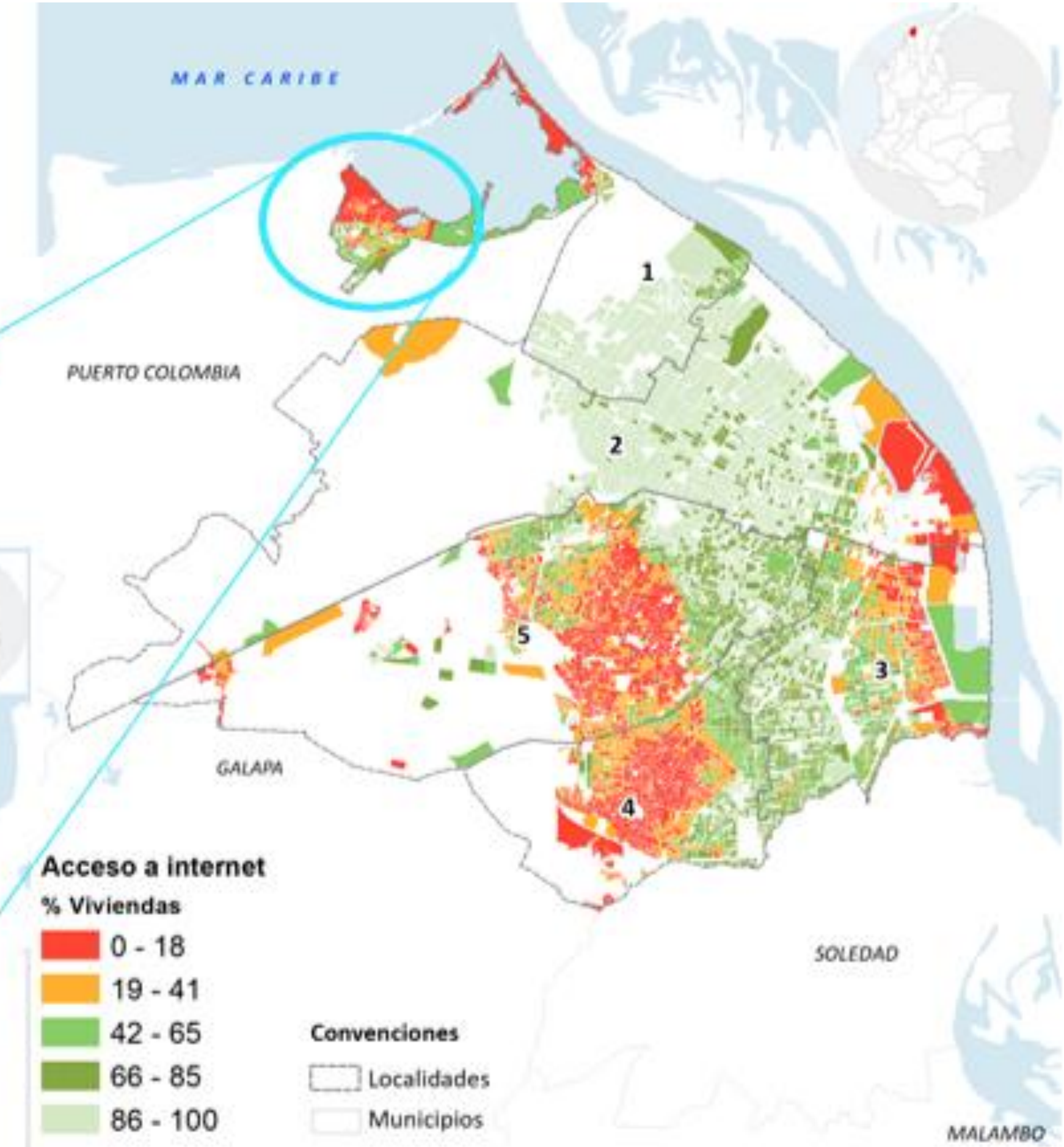
Education and Culture



Public Space, recreation  
and security



Economic Opportunities



### Pilar Diversidad social, económica y cultural de la ciudad

Brechas sociales que se reflejan por la pobreza, informalidad y condiciones de seguridad



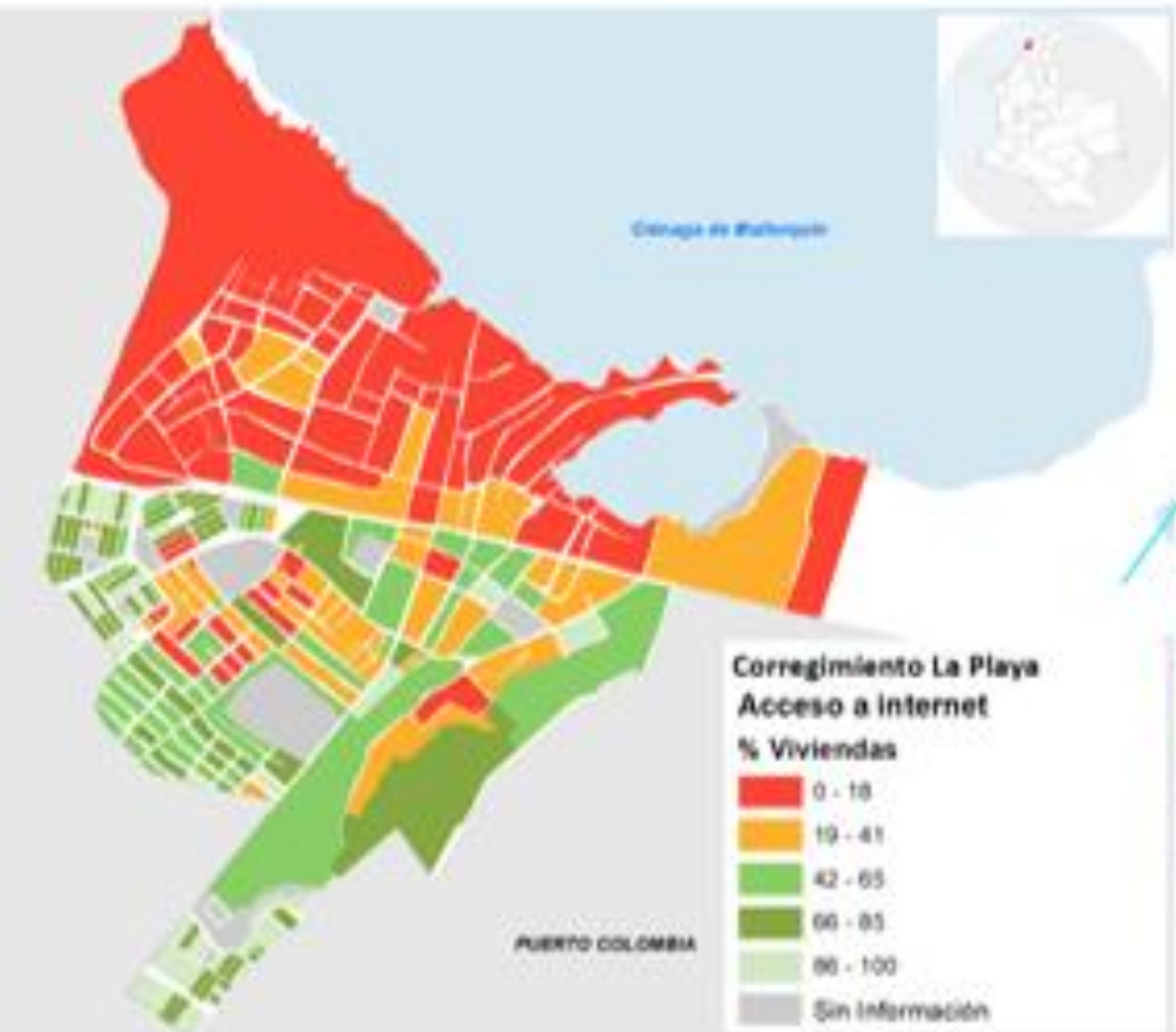
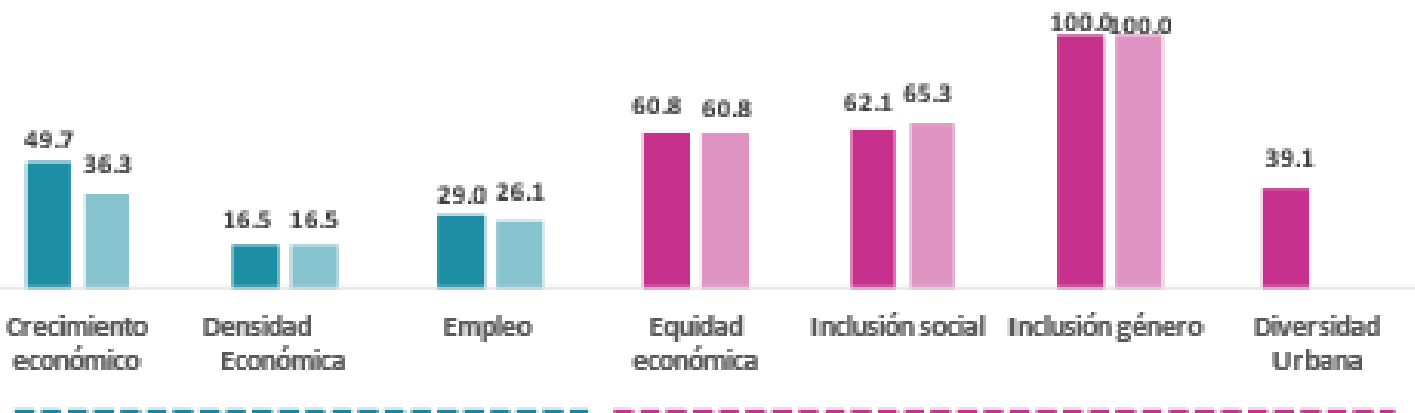
Oportunidades económicas

Cúcuta 32,5  
Villa del Rosario 29,9



Equidad e inclusión social

Cúcuta 74,3  
Villa del Rosario 62,2



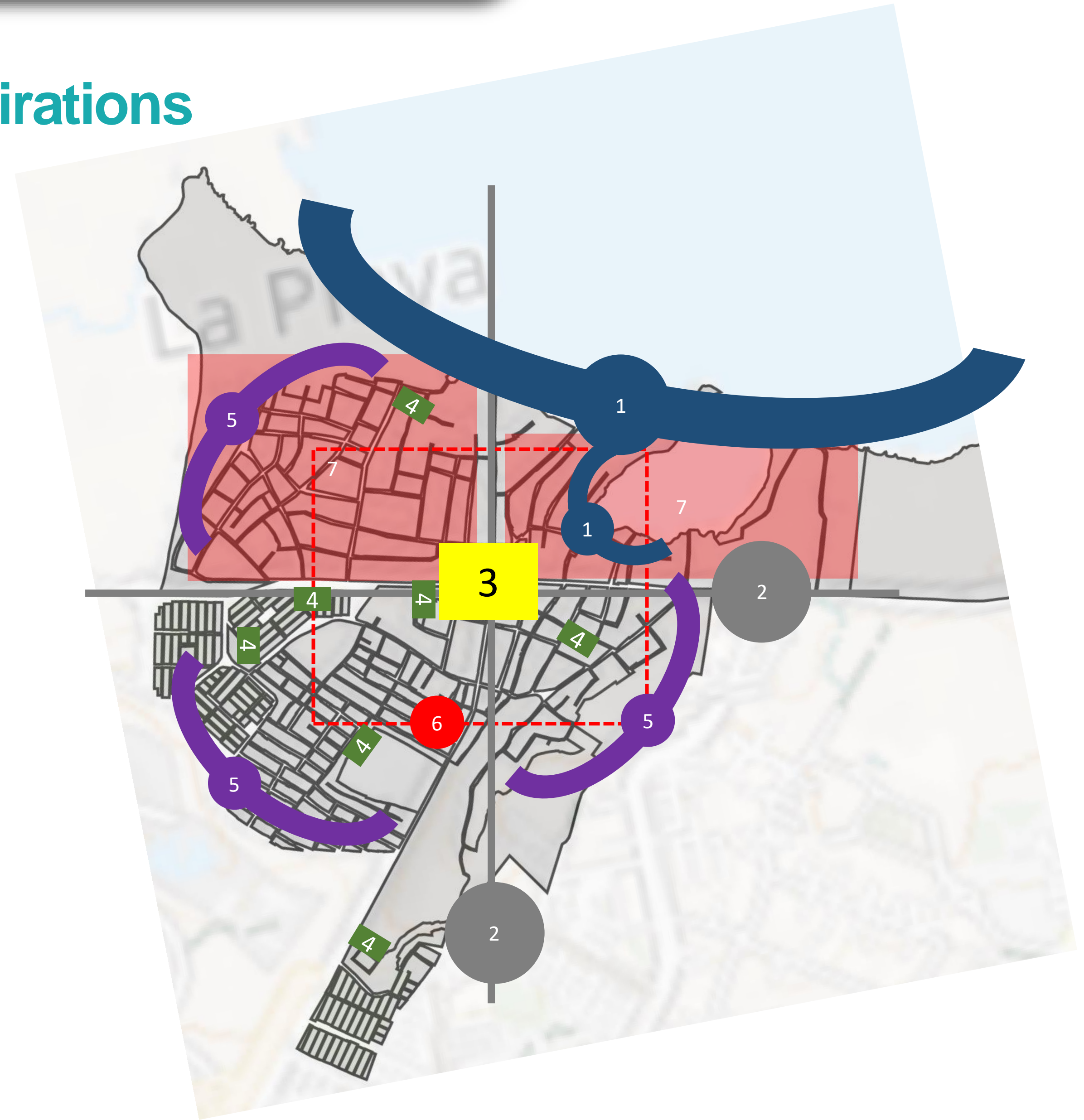


# Territorial Interventions based on evidence and data

## Corregimiento La Playa – Barranquilla Leverage Community knowledge and aspirations

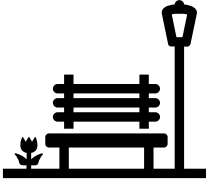


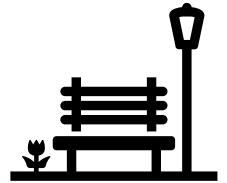
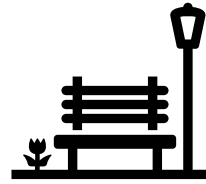


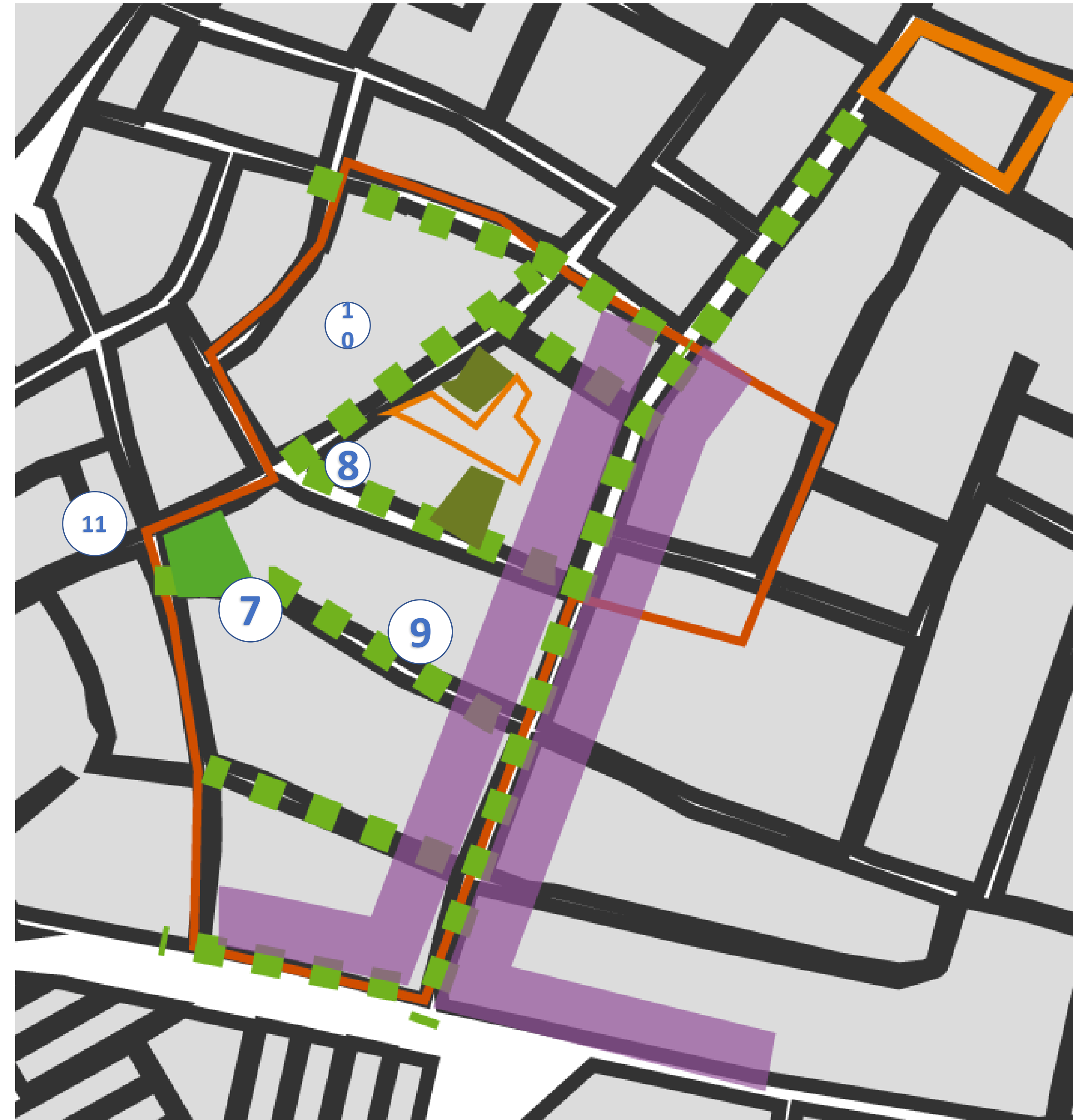
- 1 Restoration of environmental edges
- 2 Consolidation of the road system structure
- 3 Consolidation of the main centrality
- 4 Strengthening of the network of public recreational and sporting spaces
- 5 Treatment of urban-rural transition edges
- 6 Consolidation of mobility axes of proximity - intra quadrants
- 7 Integrated neighborhood improvement





## Corregimiento La Playa – Barranquilla Leverage Community knowledge and aspirations

-  **7** Green infrastructure programme
-  **8** Construction of health facilities
-  **9** Mixed land use corridor (residential, commercial, services)
-  **10** Security equipment - family police station
-  **11** Construction of multiple sports court







# THANK YOU !

*“It is in the way socio-economic policies and programmes for vulnerable groups are implemented at the local level in cities and neighborhoods that we ensure their effectiveness in creating prosperity, resilience and quality of life for all maximizing public and private investments”*